

# HDMI-AF-BO-V1BS

## 1. Description:

HDMI-AF-BO-V1BS is a simple HDMI Type A Female socket breakout board. It brings all 19 pins of a HDMI A female socket to screw terminal blocks or headers for easy testing, prototyping and breadboard connection. For breadboard connections, user can use the 20pin headers on the bottom of the breakout board to mount on a breadboard.

## 2. Features:

- All 20 pins (including shield) of a HDMI Type A Female Socket brought out to headers or screw terminal blocks
- Securely stay on the PCB with Through Hole type HDMI connector
- Various connecting method chosen by users.
- 2 mounting holes with 3mm diameter hole size
- 2.0"(50.8mm)X1.2"(30.48mm)board dimensions

## 3. Parts:

- 1) 1pc X HDMI-AF-BO-V1BS PCB
- 2) 1pc X HDMI Type A Female Socket
- 3) 2pc X 10pin0.1"(2.54mm) spacing terminal block
- 4) 1pc X 20pin0.1"(2.54mm) header

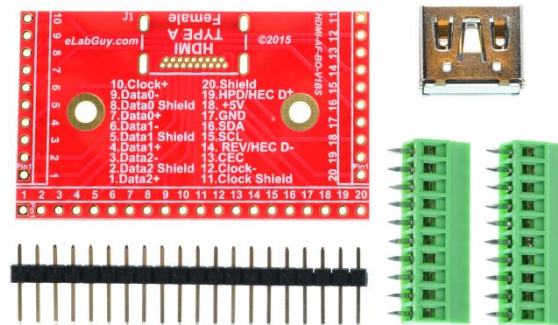
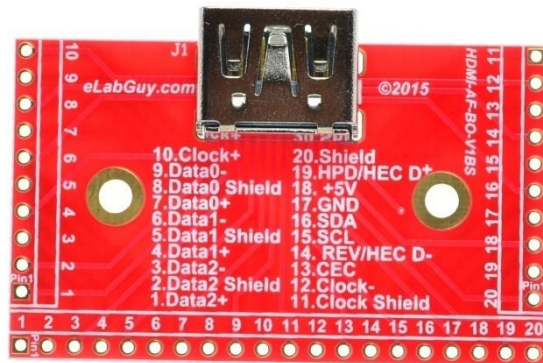


Figure 1: Parts inside the kit  
(Note: the module is not assembled, user can decide which connector to use on the module.)

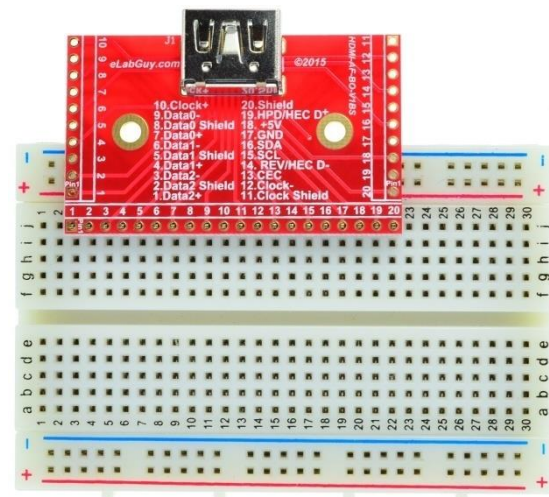


Figure 2: Example connecting the HDMI-AF-BO-V1BS on a breadboard



Figure 3: HDMI-AF-BO-V1BS Various connections

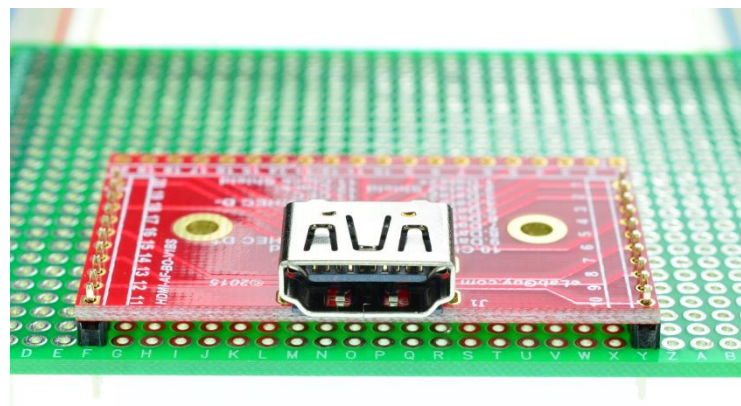


Figure 4: Solid Mounting on prototype PCB

### Related products from eLabGuy:



HDMI-AM-BO-V1B



HDMI-AM-BO-V1A



SHDMI-AF-BO-V1A



HDMI-AM-BO-V1AV



HDMI-AF-BO-V1AV